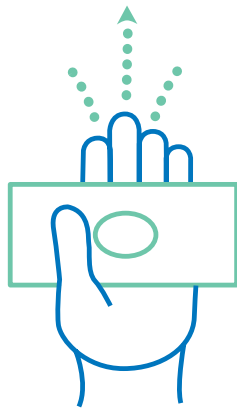
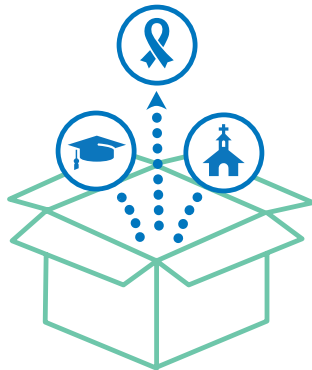


# DONOR-ADVISED FUND

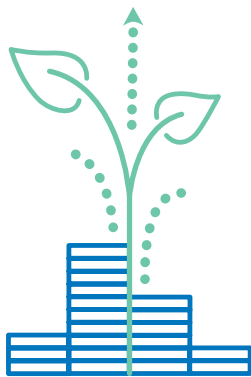
## *Your Charitable Giving Account*



Give cash, stock or other assets to your fund.  
Contributions are tax deductible.



Use your fund to support your favorite charities.



Invest through your financial advisor or in our pools.  
Your charitable dollars grow tax-free.

GREATER KANSAS CITY COMMUNITY FOUNDATION | GREATER HORIZONS