

## Lockridge

2945 Lockridge

Style: Modified Kansas City Shirtwaist, 1907

In floorplan and composition, the Modified style is identical to the regular Shirtwaist. The difference is in materials. The Modified style uses either brick or limestone for both the top and bottom stories, rather than the contrasted materials characteristic of the regular Shirtwaist.



Patricia Brown Glenn



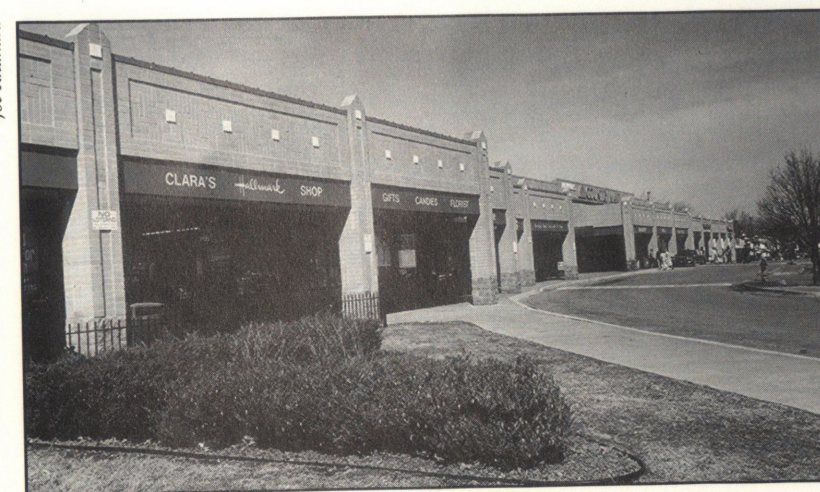
## APPENDIX II

# Walking Tour of Santa Fe Place

### Walking Tour — begins at Linwood Boulevard and Prospect Avenue

1. **Linwood Boulevard and Prospect Avenue,  
east side of Prospect Avenue  
Linwood Shopping Center**

Joe Kitahara

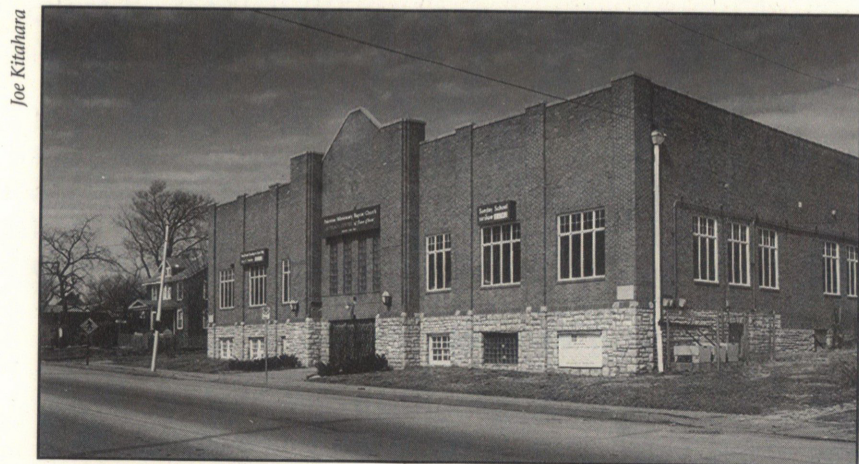


2. **Linwood Boulevard and Prospect Avenue,  
west side of Prospect Avenue  
Linwood Square**

These commercial developments are a fine example of the partnership which Santa Fe residents have established with private and public agencies working to develop the neighborhood. While Santa Fe Place is eager to encourage new and restored enterprises, the neighborhood has insisted on high quality. The Linwood business district represents the success of that effort.

3. **Linwood Boulevard and Indiana  
Central High School, "The Computer  
Unlimited/Classical Greek Magnet School."**  
Part of this high school, the district's athletic and computer science magnet, is built in Santa Fe Place, along Indiana Avenue.

4. **3100 31st Street**  
**Palestine Missionary Baptist Church**



Joe Kitahara

5. **3028 Bellefontaine**  
**Walt Disney's boyhood home**



Joe Kitahara

6. **31st Street**  
**Commercial district most affected by the riots of 1968**

31st Street was the hardest hit by the riots of 1968. Businesses along here were destroyed by fire. Santa Fe Place, in conjunction with various agencies and developers, is now making major inroads into the re-establishment of this important commercial zone.

7. **31st Street and Agnes**  
**Leon Jordan Memorial Park**

This park and the neighborhood Post Office at Linwood and Indiana were named in honor of the slain black leader. Mr. Jordan, who died in 1970, organized and headed Freedom, Inc., the first Black political organization in the area. The park served as an important setting for one of the events of Santa Fe's 40th Anniversary. It was here that three wreaths were laid: one each for Mr. Jordan and Bruce Watkins, a Councilman for the 3rd District, and one wreath in honor of Santa Fe's pioneer Black residents. Santa Fe markers — two which can be seen at 31st and Benton — were dedicated at the anniversary celebration in 1988.

8. **31st Street and Mongall**  
**Justin Place**

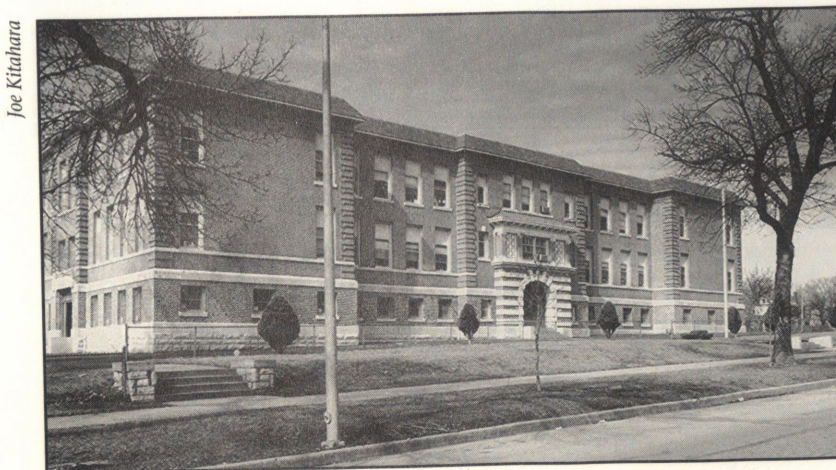
This is a recent development and a fine example of neighborhood leaders working in partnership with housing developers. Justin was built by McCormick and Baron, a nationally acclaimed

group that also built and restored other multi-family homes in the neighborhood.

9. **31st Street and Mongall**  
**Samuel U. Rogers Community Health Center South**

Across the street from Justin Place is a black-owned and run medical clinic, Samuel U. Rogers Community Health Center South. Originally called The Doctors Clinic, it opened in December, 1960, and was designed by architect Lawrence Dow. The clinic functions as a Private-Multi-Specialty type of group practice.

10. **30th Street and Benton Boulevard**  
**D. A. Holmes School.**



Joe Kitahara

The mural that Walt Disney painted for the dedication of the school's auditorium, built in the

1930s, is on the first floor, just to the right of the entrance at the front of the building. D.A. Holmes' picture is also hanging in the main hallway, and the piano that he donated to the school is now in the kindergarten room on the first floor.

11. **30th Street and Benton Boulevard**  
This is at the center of Santa Fe Place. You are standing on the site of the old Santa Fe Trail. The trail, which took settlers from Independence to Santa Fe, New Mexico, cut through Santa Fe diagonally on its way to Westport.

As the tour moves along Benton Boulevard, note the distinctive architecture. Especially significant are the houses mentioned in the chapter on architecture in this book: the Georgian Revival at 2901 Benton; 2904 Benton (former home of Rev. John S. Williams, a community leader); the Colonial Revival at 2831 Benton; and the Modified Prairie at 2810 Benton.

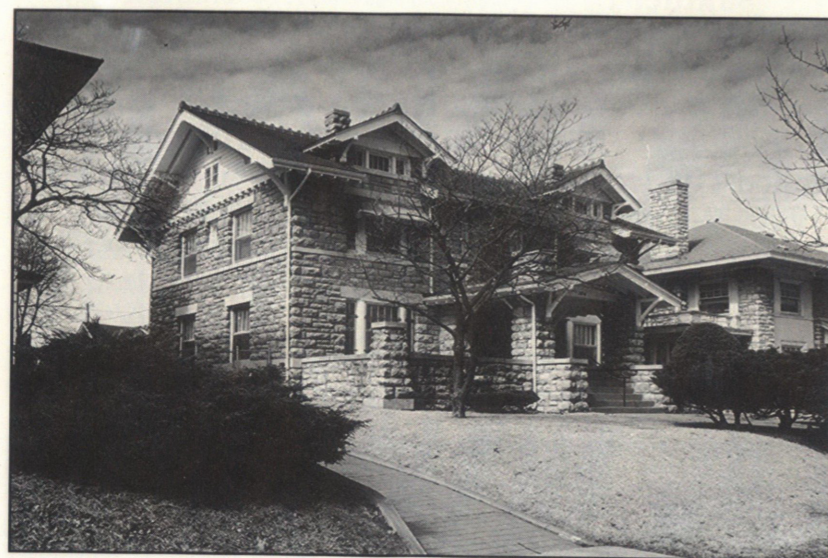
12. 2944 Victor  
Dr. Miller's home



Dr. Miller and his family were the first African-Americans to buy a home and move in to Santa Fe Place.

13. 2910 Victor  
St. Paul's Presbyterian Church  
This is headquarters for Santa Fe Council.

14. 2816 Benton Boulevard  
McKinley Neal's home.  
Mr. Neal was Missouri's first black state representative.



15. 2638 Victor  
Earl Grant's home  
Also on this block (2610 and 2614) are homes restored by Kansas City Historic Foundation.

16. 2626 28th Street  
Leroy "Satchel" Paige's home



17. 2709-2711 Benton Boulevard  
Benton Apartments  
These were the first apartment buildings constructed in Santa Fe. At the time, they were built in violation of the first neighborhood covenant. When they were completed, residents found that they were designed and constructed with the same attention to quality as the rest of the neighborhood. These buildings, along with several other

homes and apartment complexes, were renovated in the early 1980s. With a \$48 million federal NSA Rehabilitation Loan. Only one other neighborhood in Kansas City, Hyde Park, met the strict qualifications for this low-interest loan.

At this end of Benton, also note **St. Augustine's Episcopal Church** at 2732 Benton Boulevard. A statue of Bishop Augustine, the Black saint who lived in North Africa in the fourth century, is on the face of this unusual round church.

